



TARGETING GOLD IN THE HEART OF THE WEST AUSTRALIAN GOLDFIELDS

ASX:CAZ • CAZALYRESOURCES.COM.AU

Disclaimers & Important Information



DISCLAIMER

This presentation has been prepared by Cazaly Resources (Company) to provide general information about the Company and its project portfolio. The information in this document is in summary form and should not be relied upon as a complete and accurate representation of any matters that a reader should consider in evaluating the Company. This presentation does not purport to contain all the information that a prospective investor may require for any potential investment in the Company. The reader is referred to the Companies website www.cazalyresources.com.au and public reports for detailed information about the Company and its projects.

COMPETENT PERSONS STATEMENT ASX: CAZ

The information in this presentation reliably represents the available data as referenced in this document, and has been reviewed by Ms Tara French and Mr Don Horn, who are employees of the Company. Ms Tara French and Mr Horn are both Members of the Australasian Institute of Geoscientists and have sufficient experience which is relevant to the style of mineralisation and type of deposit under consideration and to the activity which they are undertaking to qualify as a Competent Persons as defined in the 2012 Edition of the 'Australasian Code for Reporting of Exploration Results, Mineral Resources and Ore Reserves'. The company confirms that it is aware the historical information may not have been reported in accordance with JORC 2012, and the more recent information was reported in accordance with JORC 2012, it is also not aware of any new information or data that materially affects the information included in the original reports. Ms Tara French and Mr Horn both consent to the inclusion of the matters based on the information in the form and context in which it appears.

The Company confirms that it is not aware of any new information or data that materially affects the information included in the original market announcements and in the case of estimates of Mineral Resources or Ore Reserves, that all material assumptions and technical parameters underpinning the estimates in the relevant market announcement continue to apply and have not materially changed. The company confirms that the form and context in which the Competent Person's findings are presented have not been materially modified from the original market announcement.

The information in this presentation that relates to the Bommie porphyry copper mineral resource estimation is based on work completed by Mr. Stephen Hyland, a Competent Person and Fellow of the AusIMM. Mr. Hyland is Principal Consultant Geologist with Hyland Geological and Mining Consultants (HGMC), who is a Fellow of the Australian Institute of Mining and Metallurgy and holds relevant qualifications and experience as a qualified person for public reporting according to the JORC Code in Australia. Mr Hyland is also a Qualified Person under the rules and requirements of the Canadian Reporting Instrument NI43-101. Mr Hyland consents to the inclusion in this report of the information in the form and context in which it appears.

The information in this presentation that relates to the Mount Angelo North Mineral Resource is based on information compiled by Ms Vanessa O'Toole Principle Consultant of Honey Mining and Resources Pty Ltd, a Competent Person, who is a Member of The Australasian Institute of Mining and Metallurgy and has sufficient experience that is relevant to the style of mineralisation and type of deposit under consideration and to the activity being undertaken to qualify as a Competent Person as defined in the 2012 Edition of the 'Australasian Code for Reporting of Exploration Results, Mineral Resources and Ore Reserves'. Ms Vanessa O'Toole consents to the inclusion in the report of the matters based on her information in the form and context in which it appears.

COMPLIANCE STATEMENT (HISTORICAL DATA)

The Company's Competent Persons believe the historical information is a reliable representation of the available project data that has been sourced to date. The Company confirms it is not aware of any new information or data that is relevant to the understanding of the exploration results, or that materially affects the information included in the original market announcement(s). The Company confirms that the form and context in which the Competent Person's findings are presented have not been materially modified from the original announcements. The historical exploration results have not been independently validated by Cazaly and the Company is not adopting or endorsing the former owners exploration results.

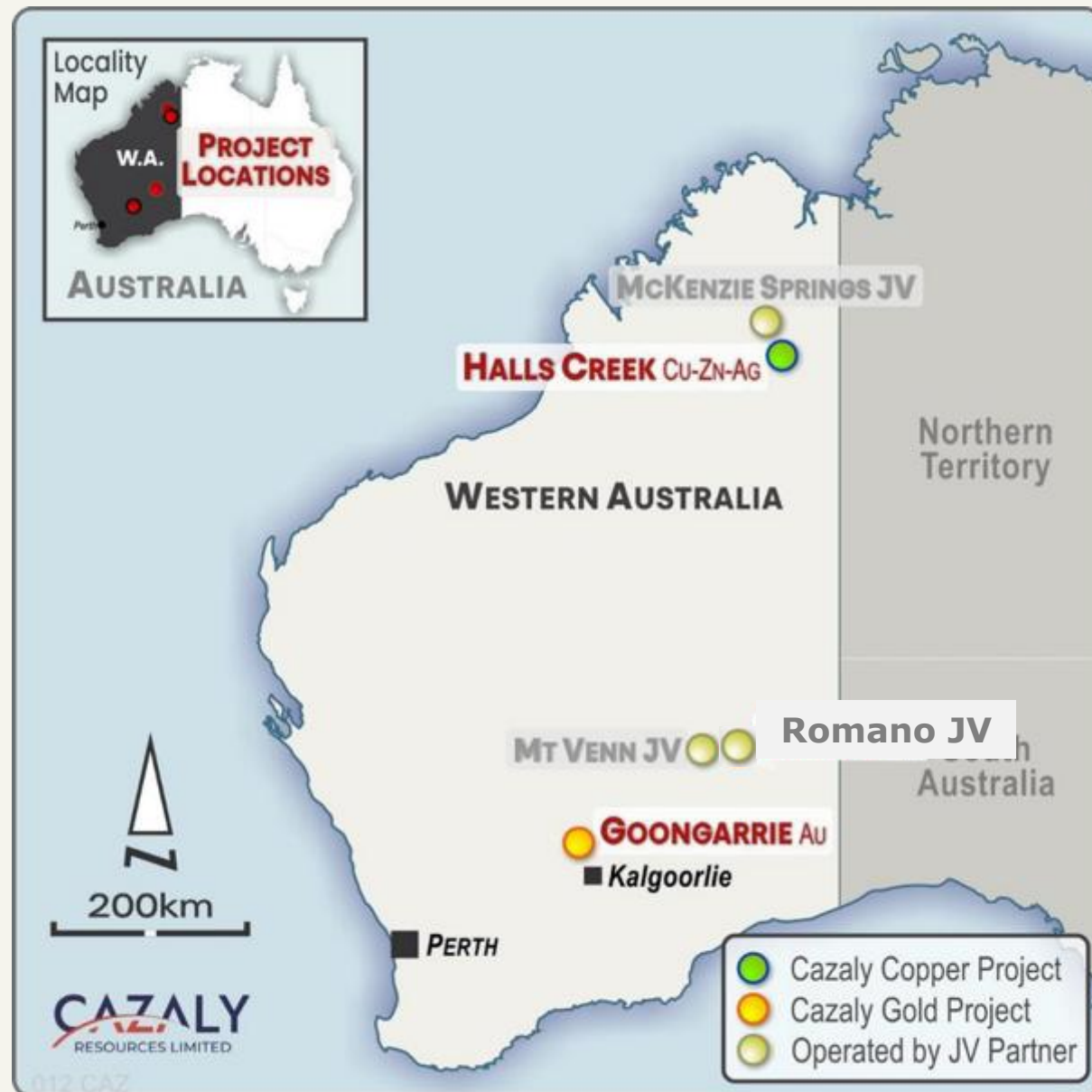
FORWARD LOOKING STATEMENT

This ASX presentation may include forward-looking statements. Forward-looking statements include, but are not limited to, statements concerning Cazaly's planned exploration program(s) and other statements that are not historical facts. When used in this document, words such as "could," "plan," "estimate," "expect," "intend," "may", "potential," "should," and similar expressions are forward looking statements. Although the Company believes that its expectations reflected in these forward-looking statements are reasonable, such statements involve risks and uncertainties and no assurance can be given that actual results will be consistent with these forward-looking statements. The forward-looking statements in this presentation reflect views held only as at the date of this presentation.

Cazaly Resources Limited – ASX:CAZ



Cazaly is an Australian based resource exploration company that operates internationally, holding a diverse portfolio of large-scale mineral projects in Australia, Namibia & Canada



Corporate Overview

HIGHLY EXPERIENCED LEADERSHIP TEAM



Clive Jones
Chairman

Founding Director of Cazaly and Bannerman Energy, +35 years' mineral & energy sectors.



Tara French
Managing Director

Exploration Geologist, +25 years' resource industry experience.



Jonathan Downes
Non-Executive Director

+30 years' experience in the mineral & energy sectors. Managing Director of Dundas Minerals.



Terry Gardiner
Non-Executive Director

+25 years' experience in capital markets, corporate advising, stockbroking.



Don Horn
Exploration Manager

Exploration Geologist, +30 years of experience in resources.



Mike Robbins
Company Secretary

+30 years' resource industry experience at operational and corporate levels.

TIGHTLY HELD REGISTER

	%
N McMahon (Estate) & Assoc.	7%
Directors & Management	10%
Other Top 20	21%
Other	62%

CAPITAL STRUCTURE

Share Price (6 March 2026)	\$0.03
Cash & Investments (31 December 2025)	\$5.1M
Market Capitalisation	\$16.3M
Fully paid ordinary shares	580.7M
5M options @ \$0.045 exp 22/2/29	5M
5M options @ \$0.045 exp.13/12/26	5M

IRON ORE ROYALTIES

Royalty Retained

Parker Range	A\$0.50/t after 1st 10Mt
Hamersley (ASX:EMA)	US\$0.30/t

Strategic Goldfields Location



GOONGARRIE

LARGE SCALE GOLD PROJECT



JOINT VENTURE (CAZ 25%)

WITH BRIGHTSTAR RESOURCES (ASX: BTR)
RIGHT TO EARN UP TO 80%



ACTIVE EXPLORATION

ASX:CAZ • CAZALYRESOURCES.COM.AU

- Cazaly Copper Project
- Cazaly Gold Project
- Operated by JV Partner



Location, Location, Location!



90kms north of Kalgoorlie



Large landholding across BTZ-BL Shear Zone

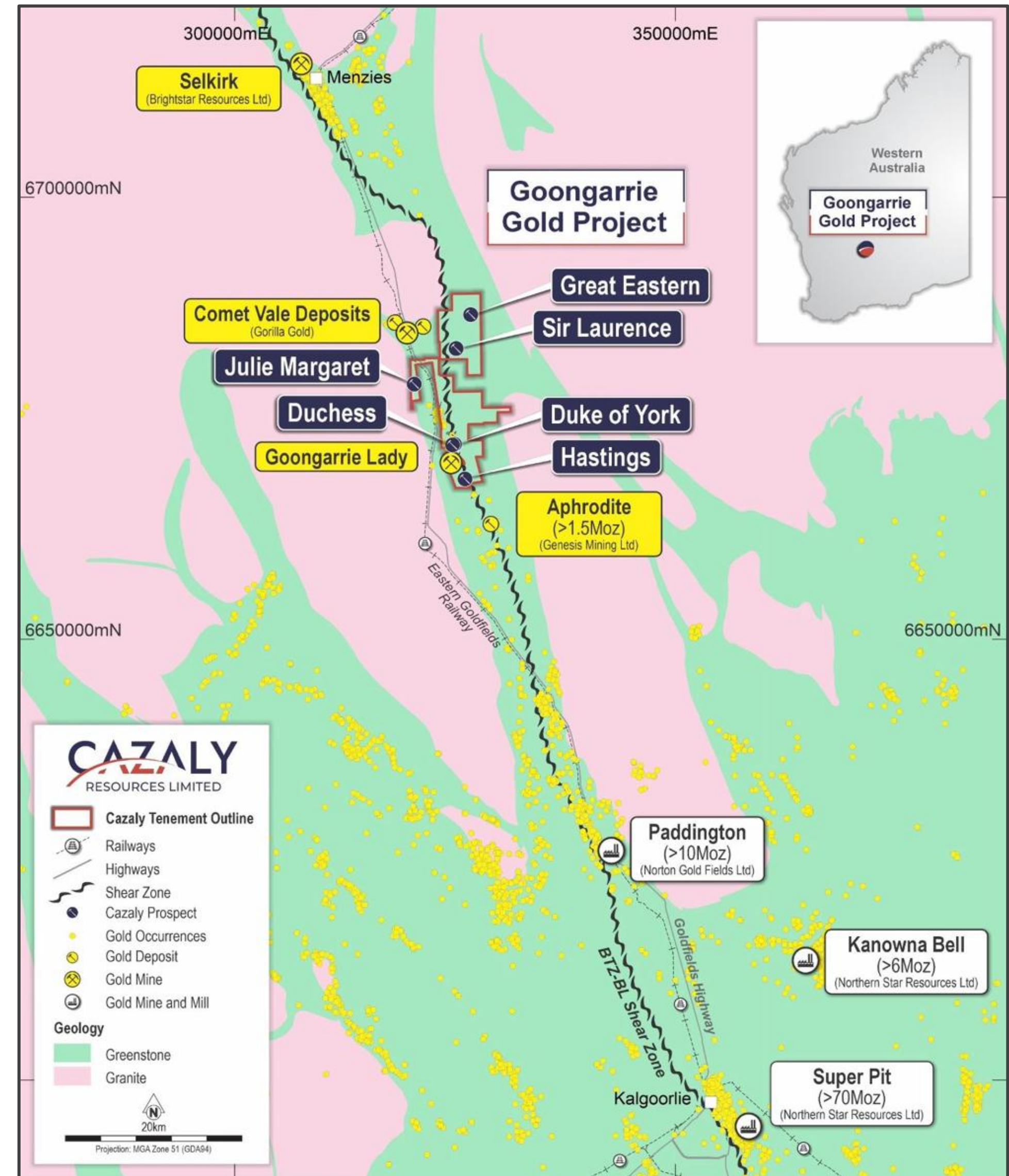


One of the richest gold mineralised structures in the Goldfields



Host to multimillion ounce deposits:

- Paddington (>10Moz Au) Norton Pty Ltd
- Comet Vale (96koz) ASX: GG8
- Aphrodite deposit (1.7 Moz Au) ASX: GMD
- Menzies (1.3 Moz Au) ASX: BTR



Untested at Depth



Early drilling by Gorilla Gold at Lakeview:
19m @ 18.1g/t Au and 11m @ 24.8g/t Au¹



Gold targets identified over ~20km strike

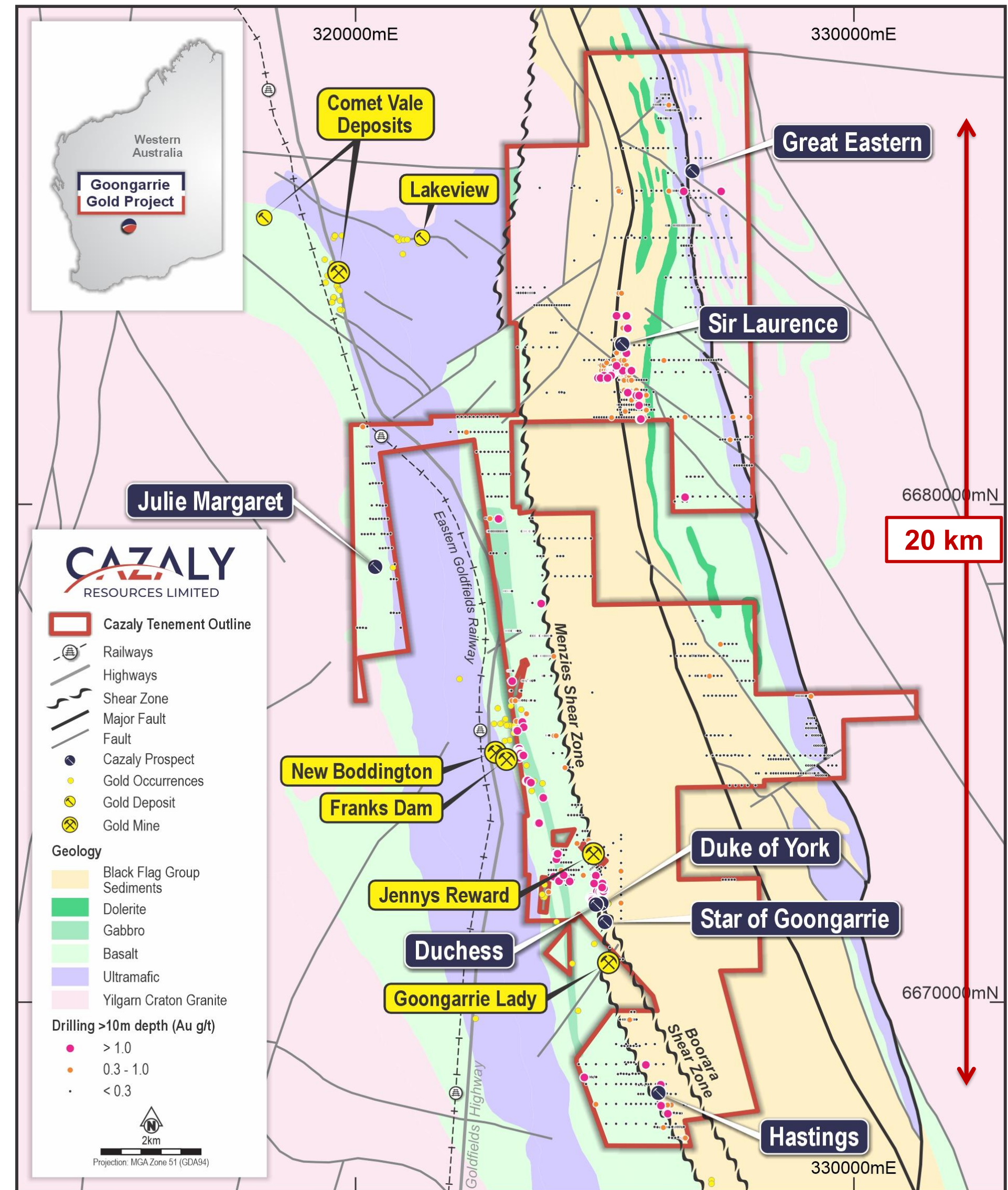


Multiple N-S Shear Zones prospective for gold mineralisation in areas of structural complexity



Goongarrie is underexplored and gold mineralisation is untested at depth

1. 28 FEBRUARY 2025. GORILLA GOLD MINES LTD ASX ANNOUNCEMENT "LAKEVIEW HIGH-GRADE GOLD INTERCEPTS GROW MINERALISATION BEYOND 400M STRIKE."



Focused Exploration



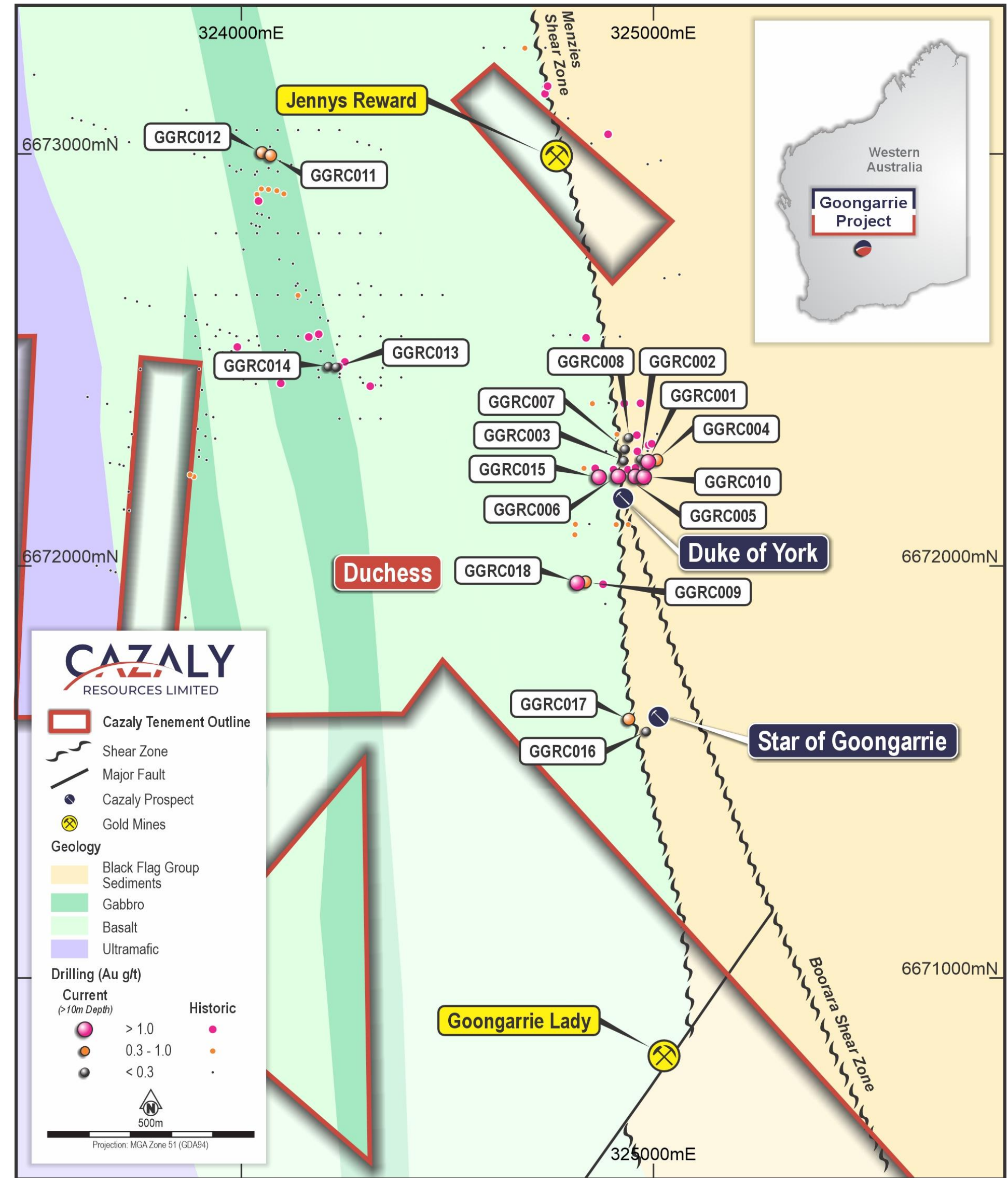
2025 Phase 1 RC drilling between gold mines, and to validate historical drill intercepts



Jennys Reward open pit
Historically mined 53kt @ 2.9g/t for ~5koz1



Lady Goongarrie open pit
Currently mined by private Co



Anomalous RC Drill Results

PHASE 1 RC DRILLING - HIGHLIGHTS



Duke of York - Validated historical intercepts

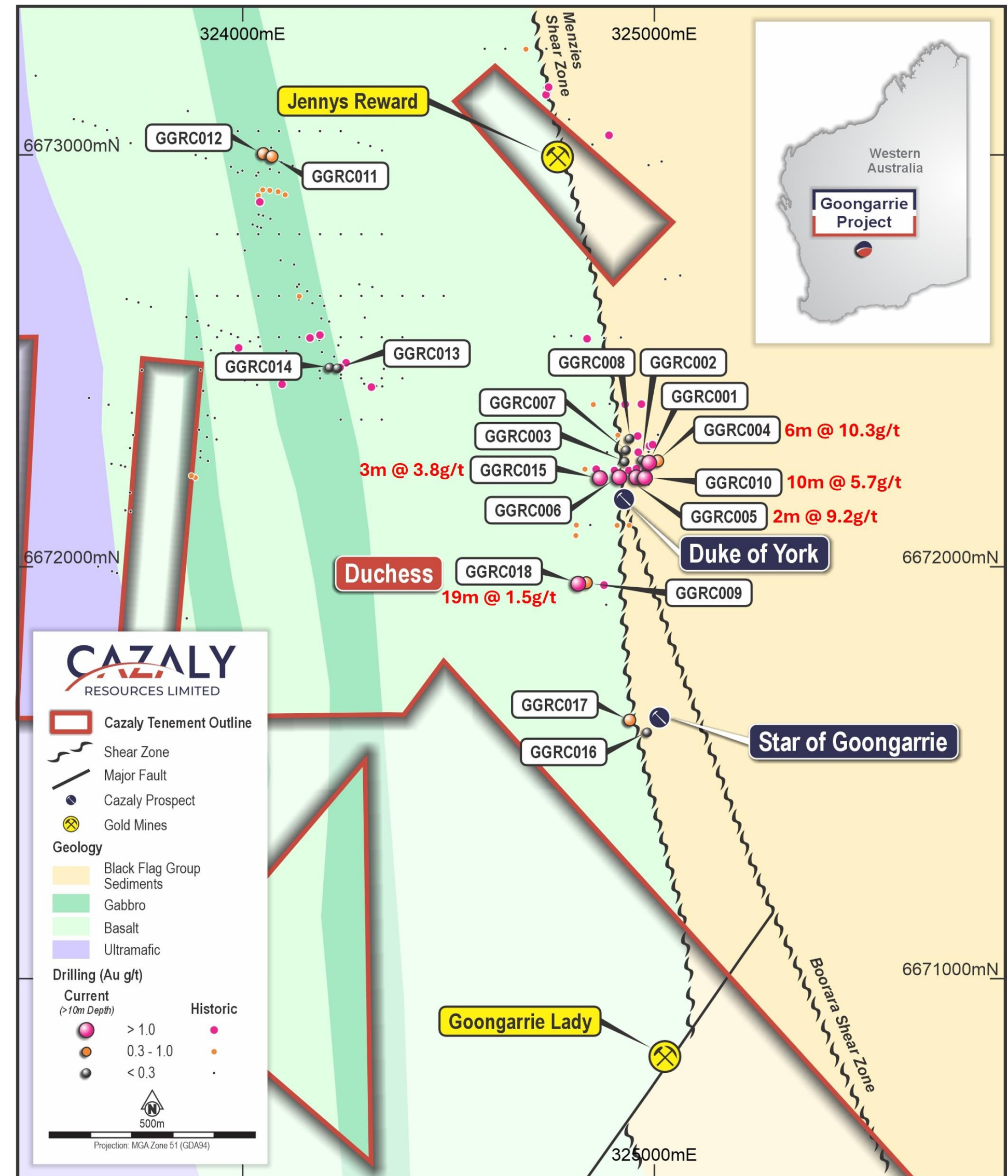
New drill results above 10 gold gram metres:

- GGRC004** – 6m @ 10.3g/t from 27m
incl. 1m @ 56.3g/t from 27m
- GGRC005** – 2m @ 9.2g/t from 61m
- GGRC010** – 10m @ 5.7g/t from 32m
incl. 2m @ 23.8g/t from 34m
- GGRC015** – 3m @ 3.8g/t from 169m



Duchess - New gold target identified

- GGRC018** – 19m @ 1.5g/t from 104m
incl. 4m @ 4.7g/t from 119m



Anomalous RC Drill Results

PHASE 1 RC DRILLING - CONCLUSIONS



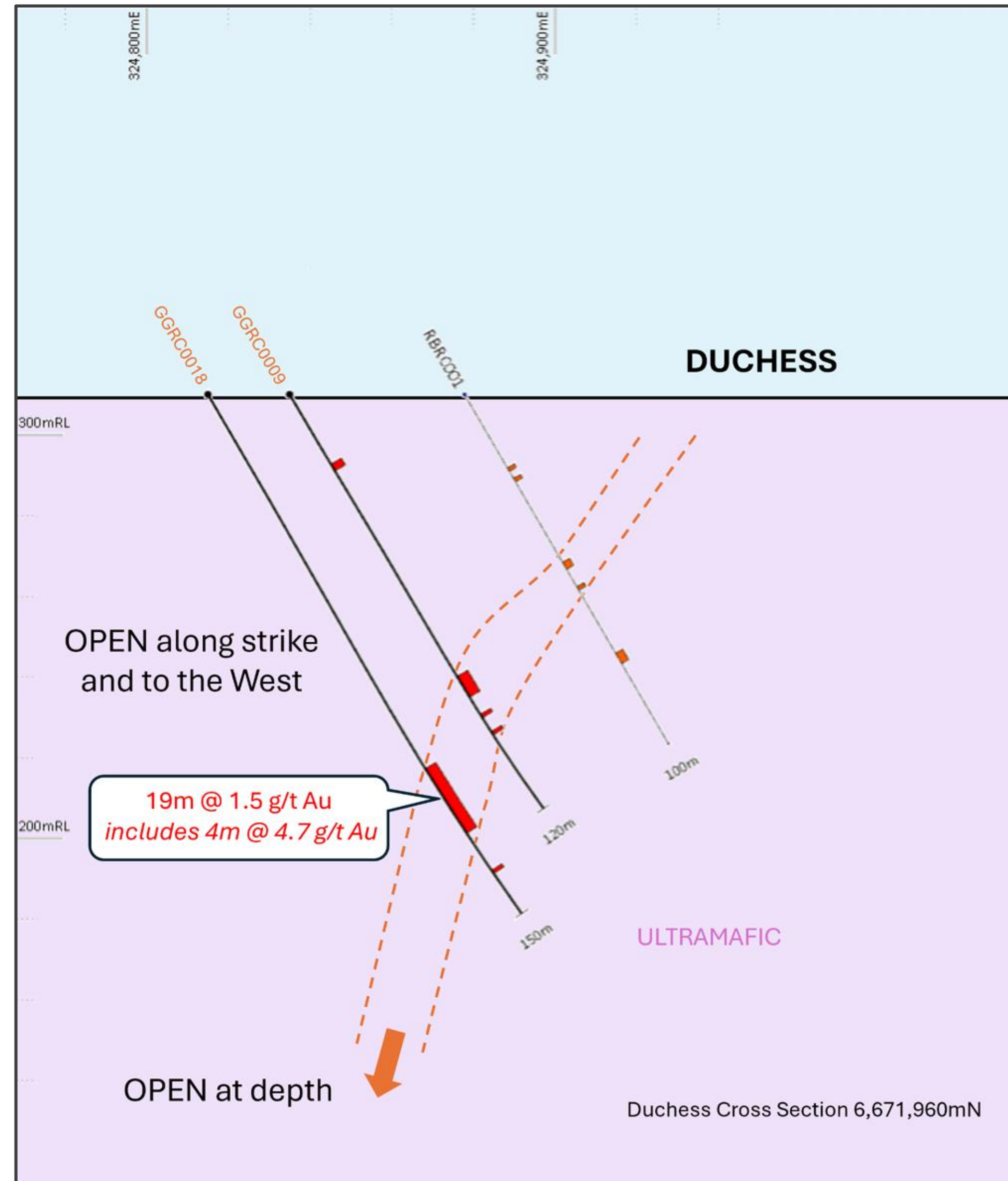
Duke of York:

- Shallow high grade mineralisation at Duke of York is open to the south and at depth
- Potential for gold mineralisation further west within the untested ultramafic unit



Duchess:

- Gold grades increase with depth
- Open in all directions
- Highlights prospectivity of untested western ultramafic at Goongarrie



Duchess Cross Section 6,671,960mN

Focused Exploration Aircore Drilling & Geophysics

+1G/T GOLD IN AIRCORE RESULTS OVER 1300M STRIKE



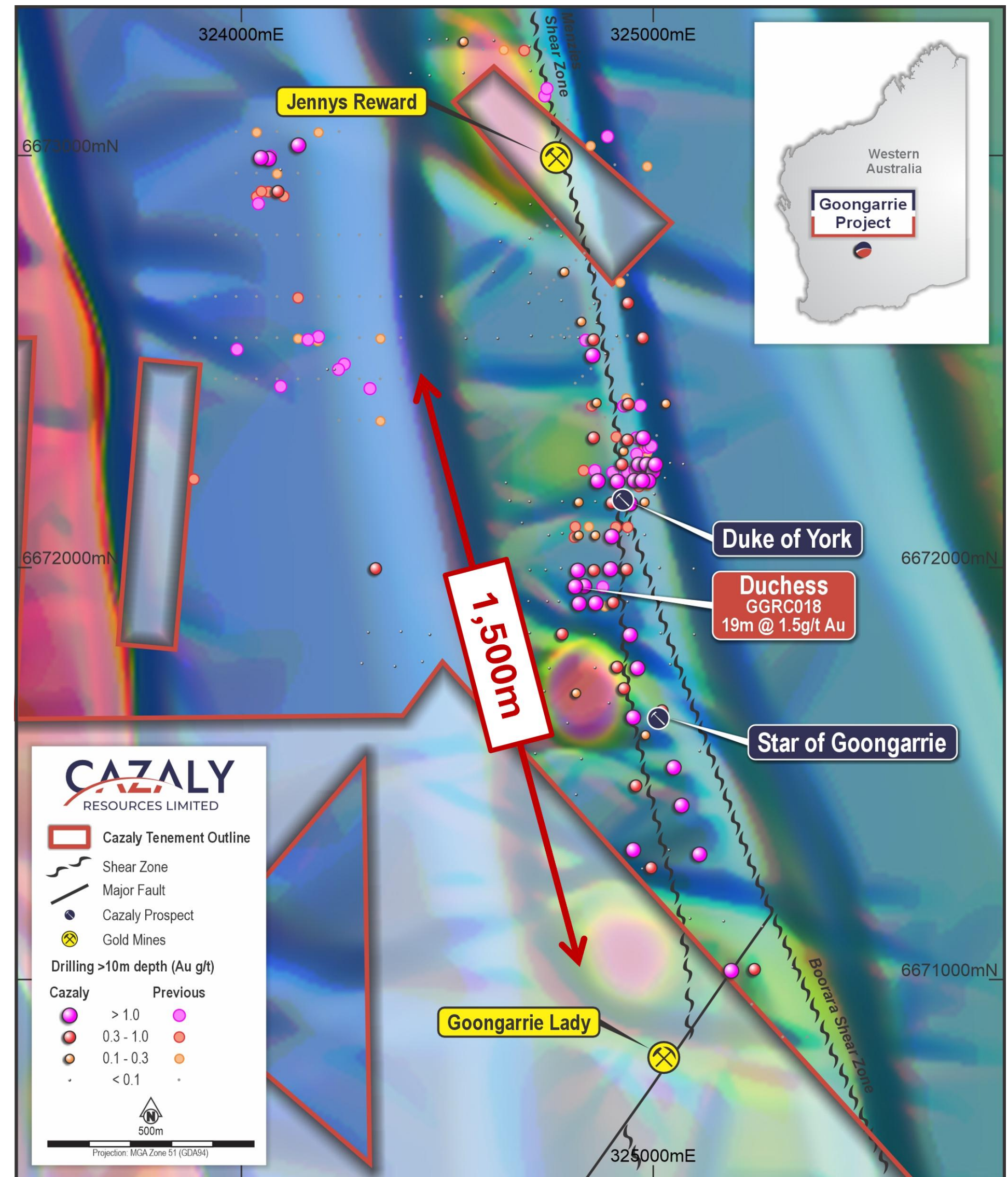
AIRCORE DRILLING DEMONSTRATES
Mineralised trend continues from
Duke of York to Duchess



GEOPHYSICS REPROCESSED
Highlights Boorara-Menzies Shear zone and
structural complexity



LITHOSTRUCTURAL INTERPRETATION
Gold associated with magnetic highs
adjacent to N-S shears and NW & NE structures



Focused Exploration 2026

Phase 2 RC Drilling in progress



+ 3000m RC Drilling

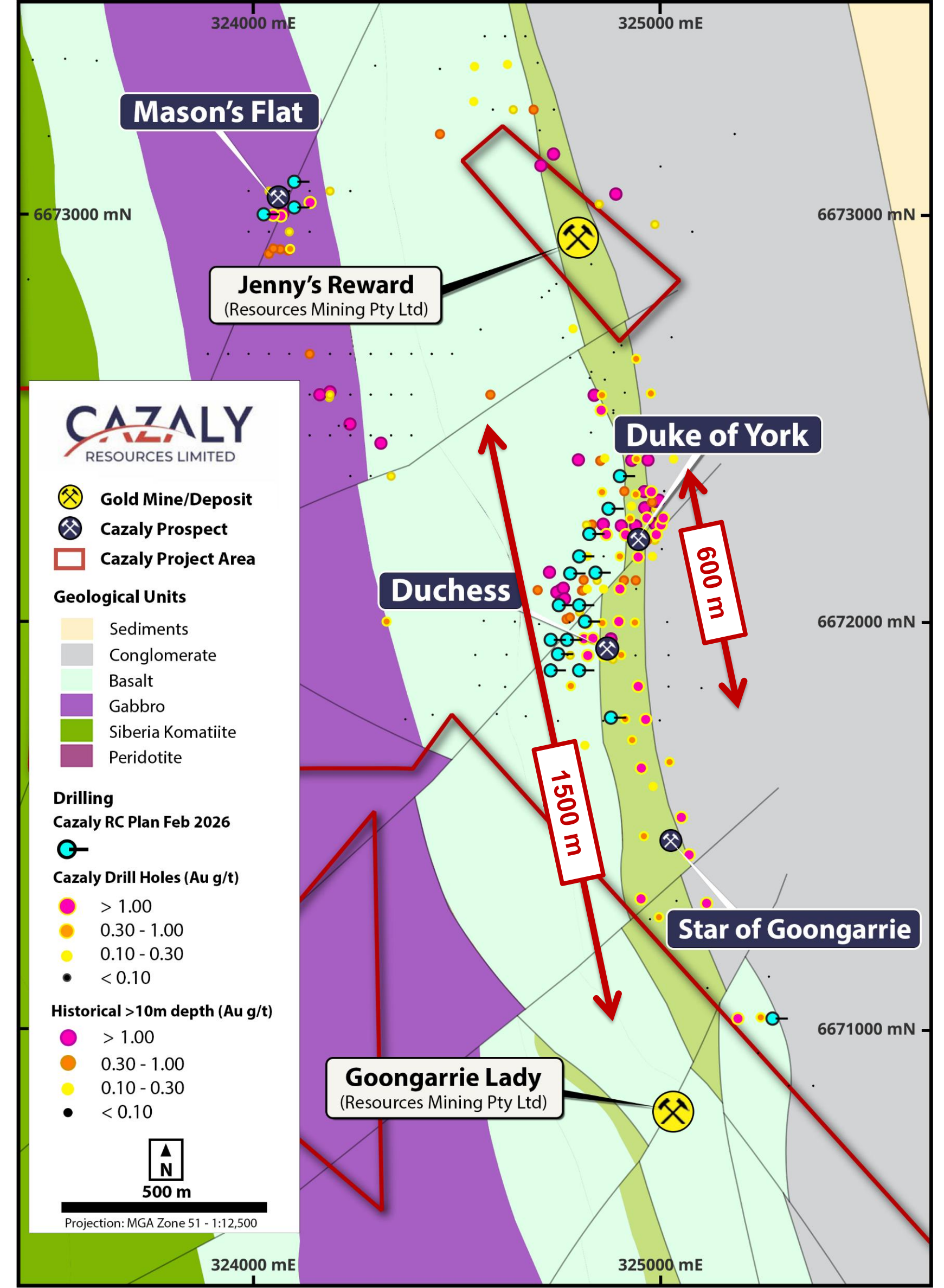
At High Grade Gold Prospects:

- Duke of York
- Duchess
- Mason's Flat



TESTING CONTINUITY & DEPTH EXTENT OF SHALLOW HIGH GRADE RESULTS OVER +600M

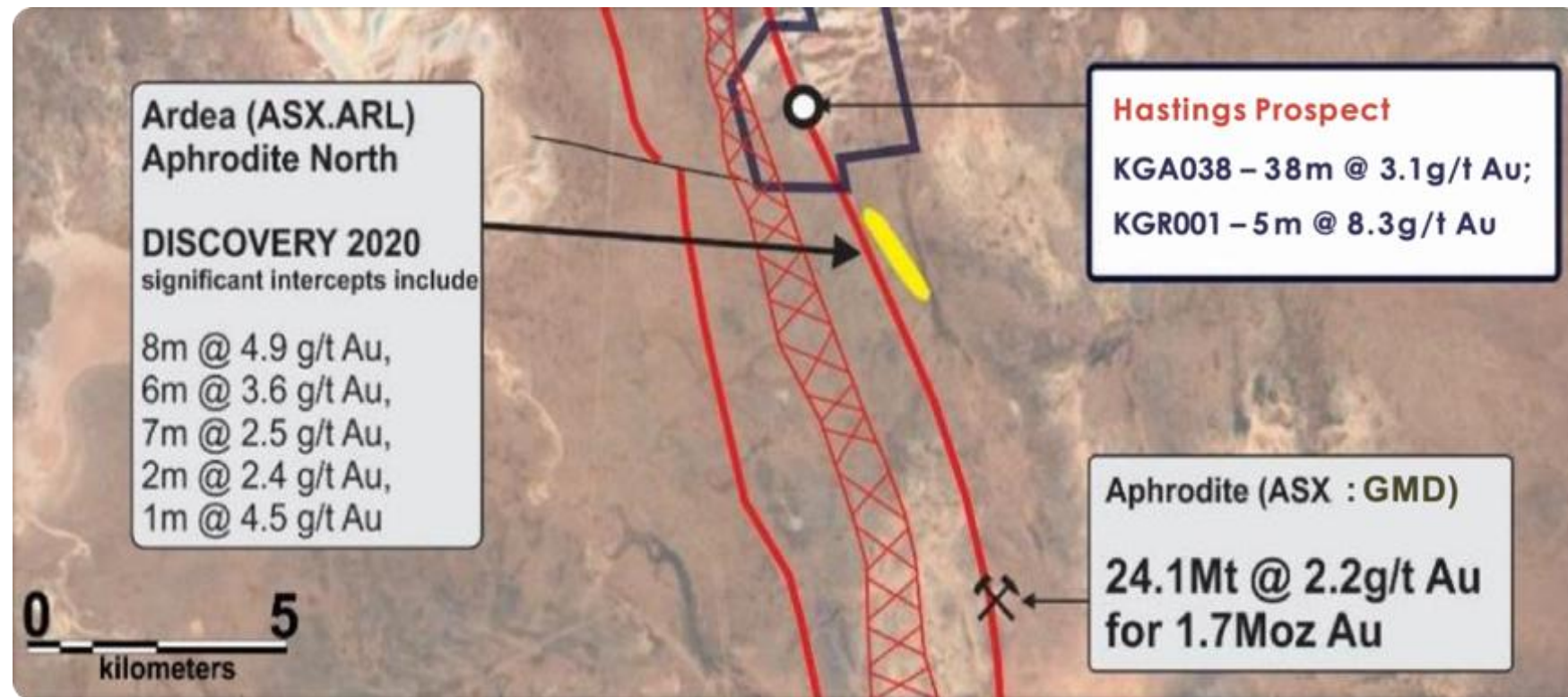
- 6m @ 10.3g/t gold DoY
- 10m @ 5.7g/t gold DoY
- 19m @ 1.5g/t gold Duchess
- 1m @ 10.8g/t gold Masons Flat (costean)



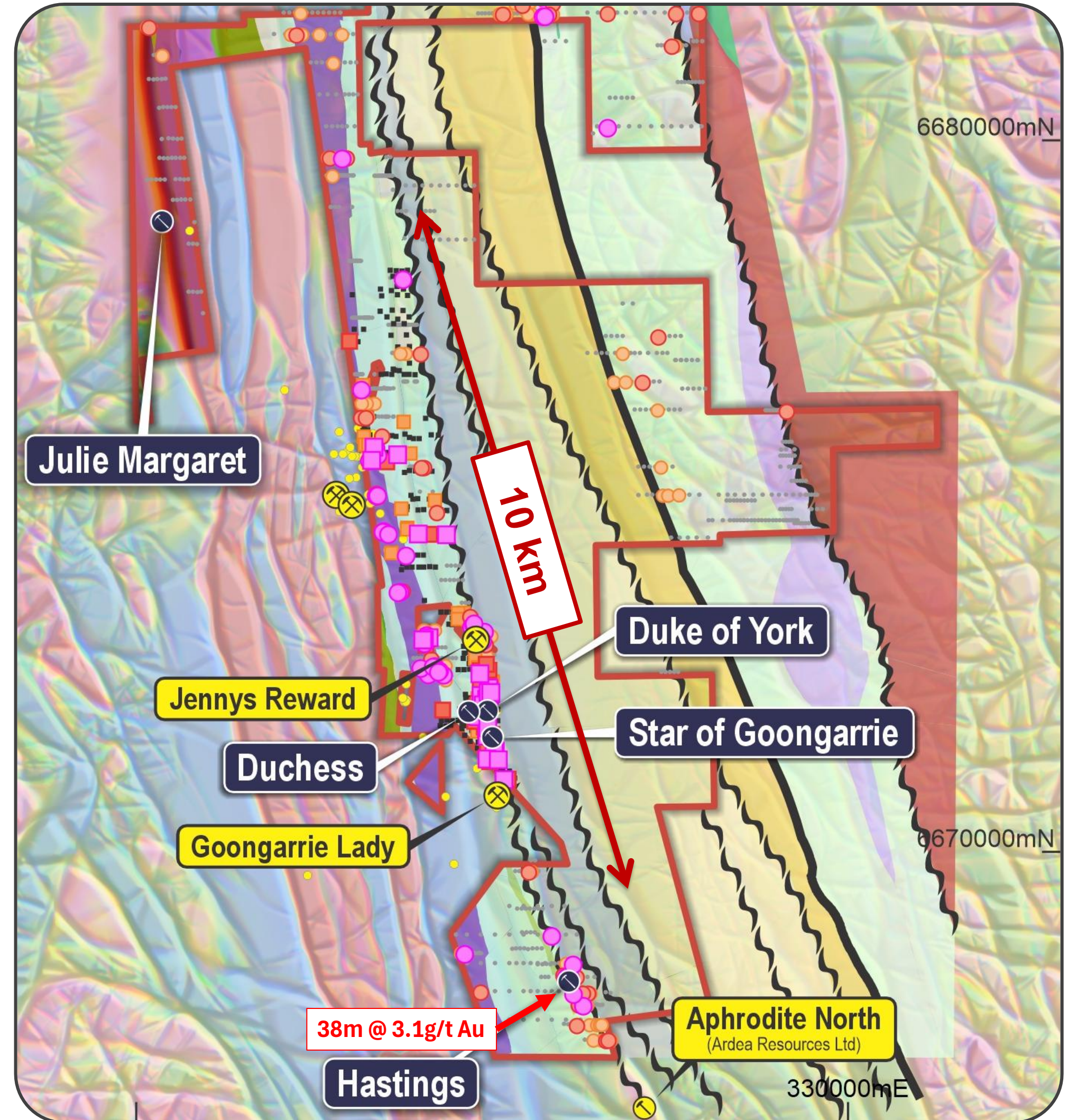
More Discovery Opportunities

Hastings Gold Prospect

- Located immediately north of Aphrodite North Gold discovery (ASX: ARL)¹
- Gold trend over 2.9km:
38m @ 3.1g/t Au; incl. 6m @ 17.2g/t Au²



1. 13 AUGUST 2020. ARDEA RESOURCES LIMITED ASX ANNOUNCEMENT. "SIGNIFICANT GOLD IN FIRST RC DRILLING AT APHRODITE NORTH"
2. 01 FEBRUARY 2021. KINGWEST RESOURCES LIMITED ASX ANNOUNCEMENT "STELLAR GOLD GRADES IN GOONGARRIE PROJECT DISCOVERY"



More Discovery Opportunities

REGIONAL SCALE TARGETS:



Multiple N-S trending shears over 20 km strike remain largely untested for gold mineralisation



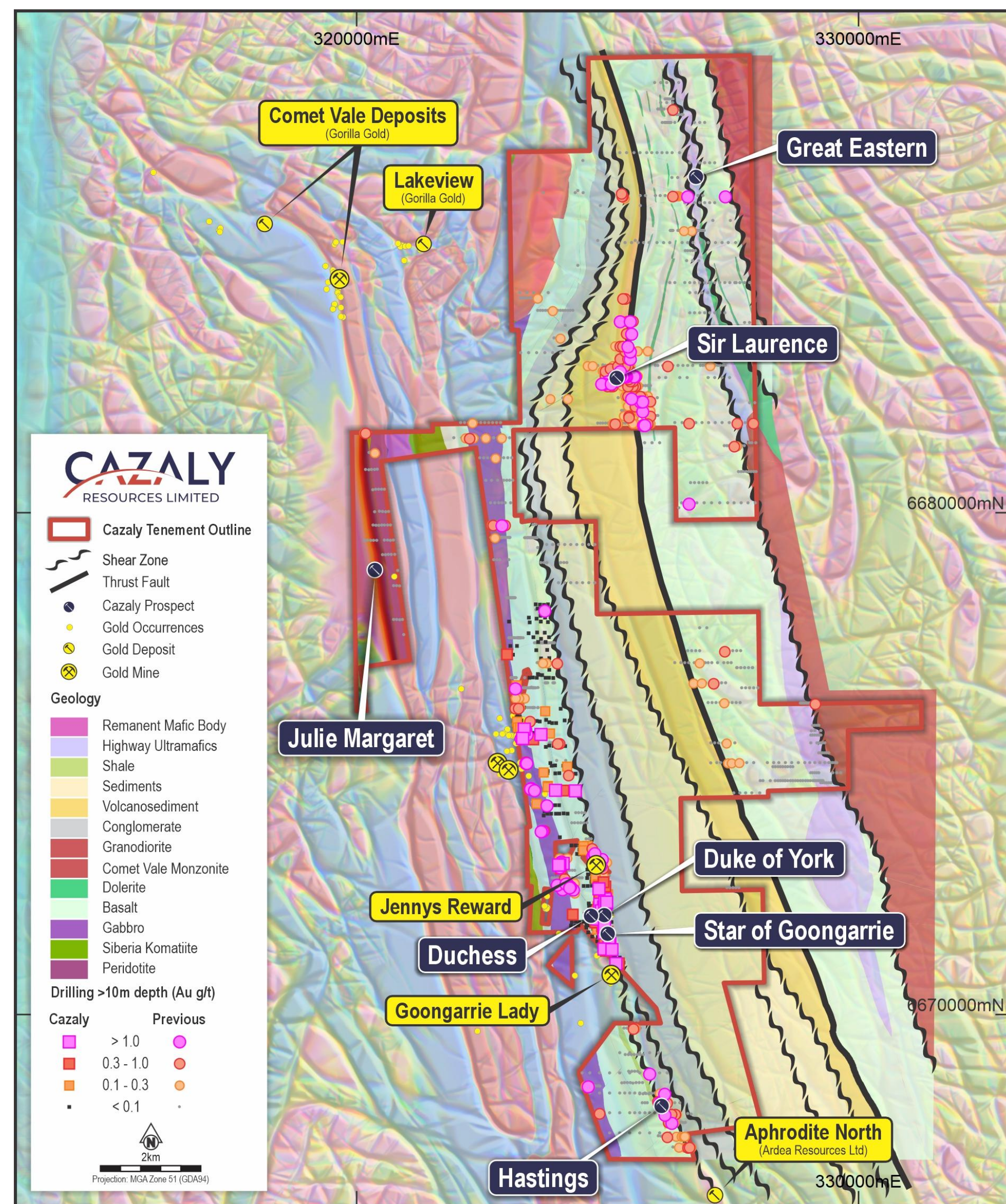
Reprocessed Aeromagnetic data shows major intersecting structures not seen in old datasets



Opportunities to focus deeper drilling around NW structures associated with magnetic highs



Systematic Exploration Targeting Anomalous Drilling Results & Geophysical Complexity



More Discovery Opportunities



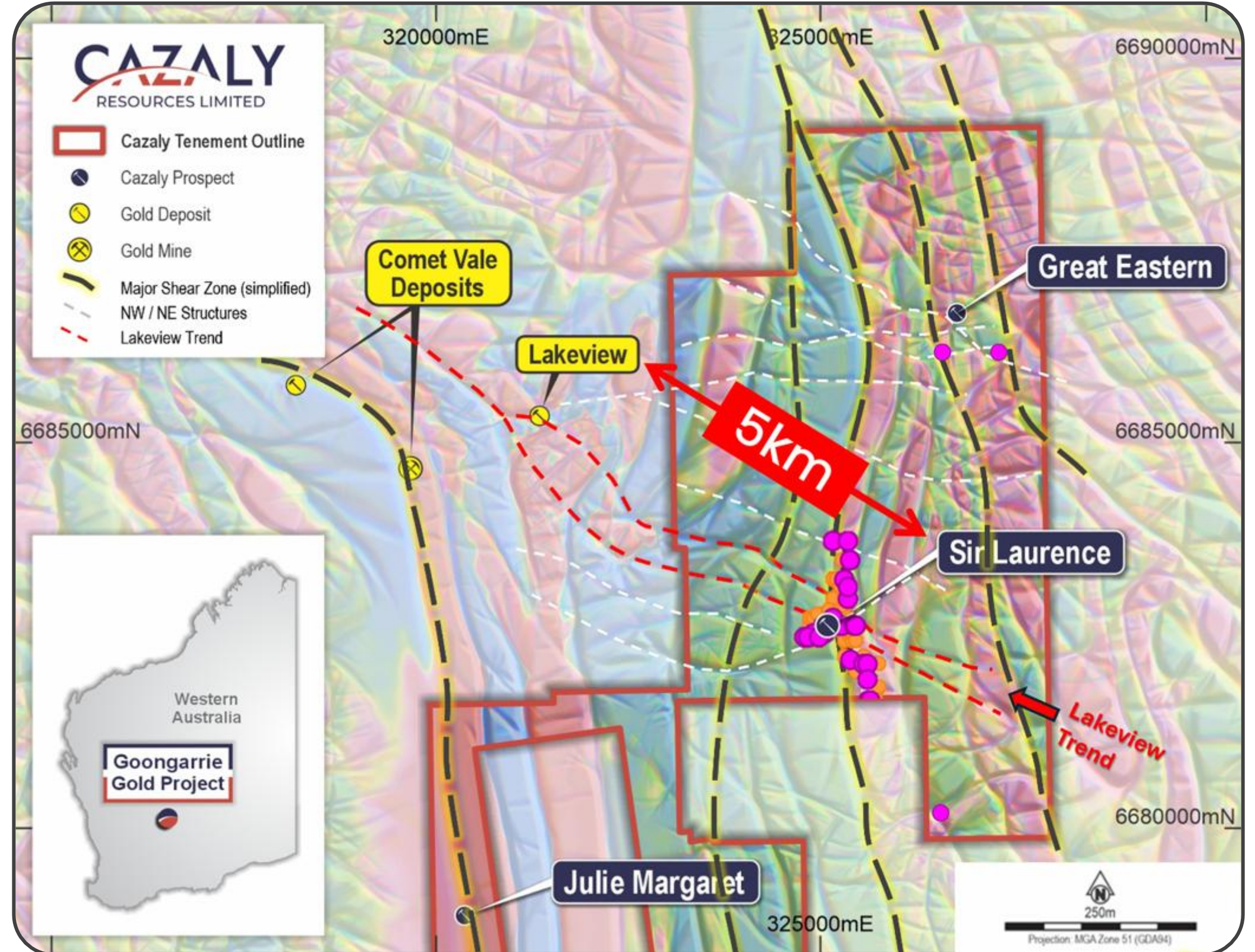
Sir Laurence Gold Prospect

- Widespread gold at the base of lake sediments over 2km strike
- Kanowna Belle style target (>5M oz Au)
- Gold intercepts include*:
 - 4m @ 2.3g/t Au
 - 3m @ 6.5g/t Au
 - 5m @ 4.8g/t Au



Great Eastern Gold Prospect

- Gold intercepts include:
 - 16m @ 0.7g/t Au & 4m @ 1.2g/t Au*



* 19 FEBRUARY 2025. CAZALY RESOURCES LTD ASX ANNOUNCEMENT. "JOINT VENTURE SECURED OVER ADVANCED GOLD PROJECT IN WESTERN AUSTRALIA'S WORLD CLASS GOLD MINING DISTRICT"

12 MONTH OUTLOOK at GOONGARRIE

Q1
2026

Q2
2026

Q3
2026

Q4
2026

Q1
2027



**STAGE 1 FARM-IN
AGREEMENT COMPLETED**

**DRILLING at the HIGH
GRADE DUCHESS AND
DUKE OF YORK PROSPECTS**

**SIR LAURENCE
DIAMOND CORE
RE-LOGGING**

**SIR LAURENCE
GROUND GRAVITY
SURVEY**



**HERITAGE SURVEY FOR
HASTINGS PROSPECT**

**DRILLING HASTINGS PROSPECT
38m @ 3.1g/t Gold**

**SIR LAURENCE
GEOPHYSICAL PROCESSING
& DRILL PLANNING**

**SOIL SAMPLING ALONG
COMETVALE TREND**

JULIE MARGARET DRILLING



**SIR LAURENCE DRILLING
STAGE 1**

**INITIAL LAKE AIRCORE
DRILLING CAMPAIGN TO
TEST NE-NW STRUCTURES**

GOLD TARGETS:

**SIR LAURENCE E-W STRUCTURAL
TARGETS**

**GREAT EASTERN FOLLOW-UP
16m @ 0.7g/t Gold
4m @ 1.2g/t Gold**



**DEEPER RC AND
DIAMOND DRILLING**

**DEEPER RC DRILLING AT
HASTINGS**

**LAKE DIAMOND DRILLING
BASED ON SUCCESS AT:
SIR LAURENCE
GREAT EASTERN**

Cu-Zn-Silver Project – Halls Creek

REGIONAL SCALE TARGETS:



Combined MRE of 97.3Mt for 285,000 tonnes contained copper



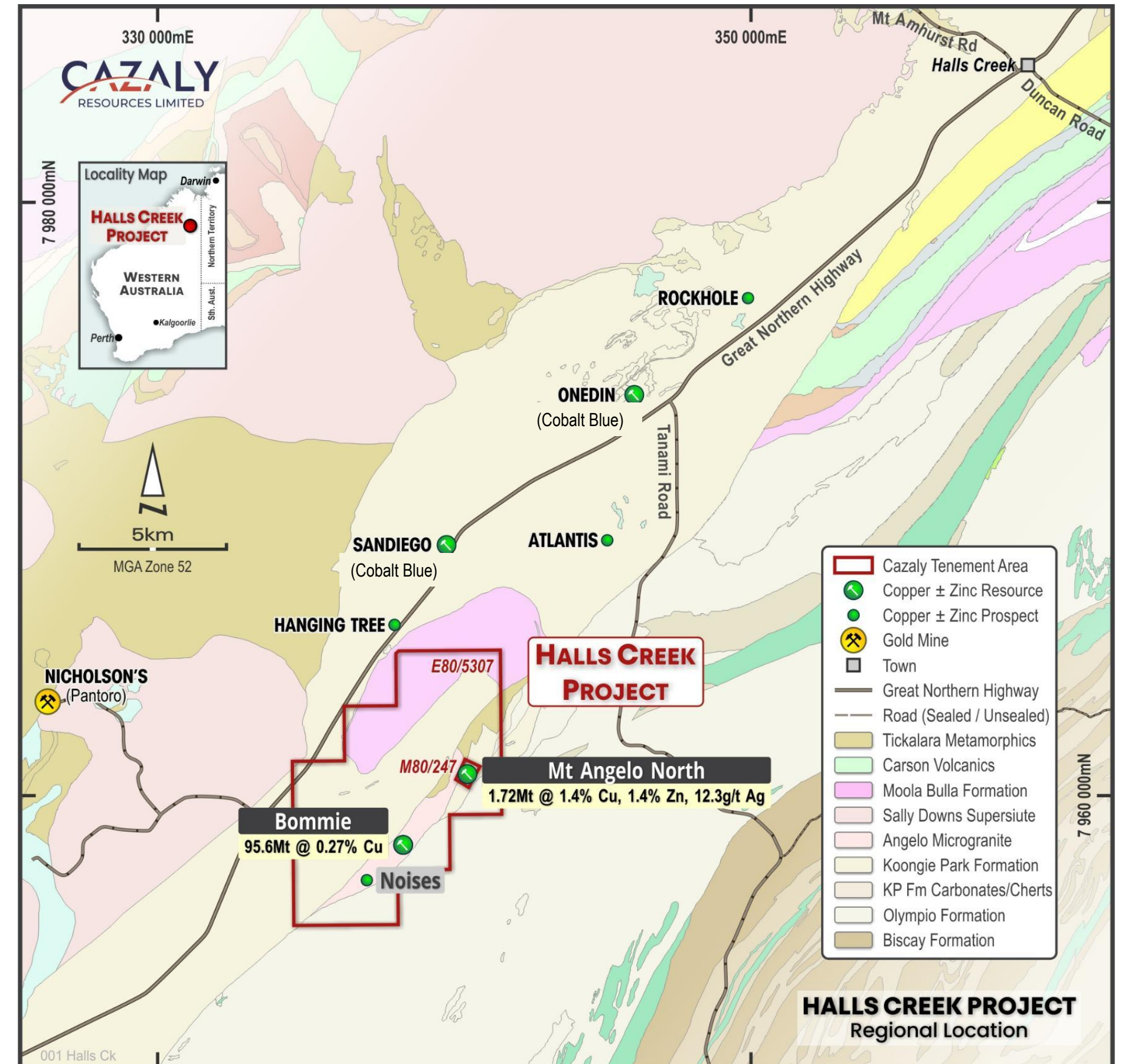
Near surface Mineral Resources



Mt Angelo VMS Deposit
1.72Mt @ 1.4% Cu, 1.4% Zn, 12.3ppm Ag



Bommie Porphyry Copper Deposit
95.6Mt @ 0.27% Copper



JOINT VENTURE PROJECTS – Western Australia

Romano, NE Goldfields

REGIONAL SCALE TARGETS:



Immediately along strike of Goldfields' 6Moz Gruyere Gold mine



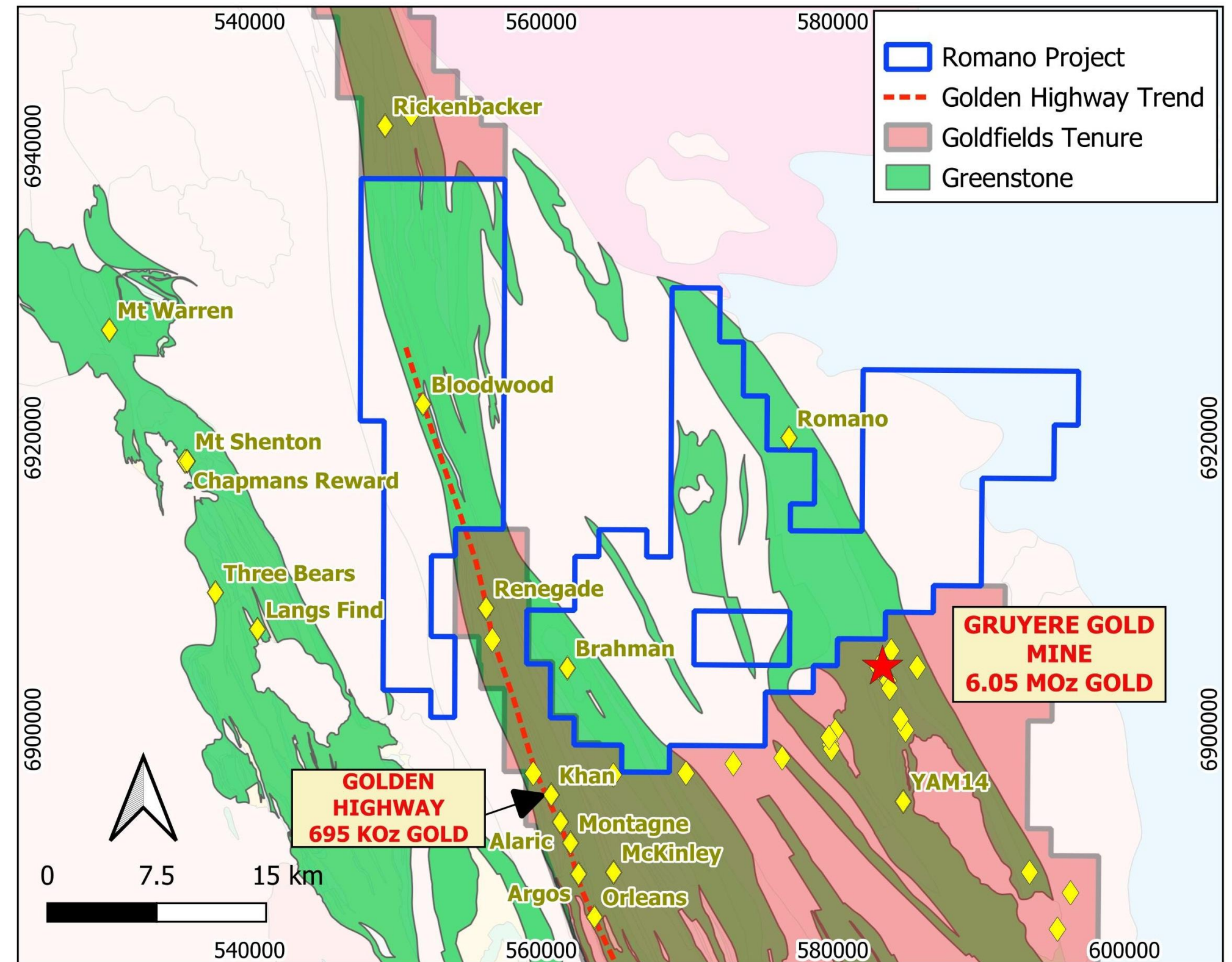
Over 70km strike of prospective, yet underexplored greenstones



JV to Dundas Minerals for \$500,000 in cash & shares + up to \$1.2M in future payments in cash and shares



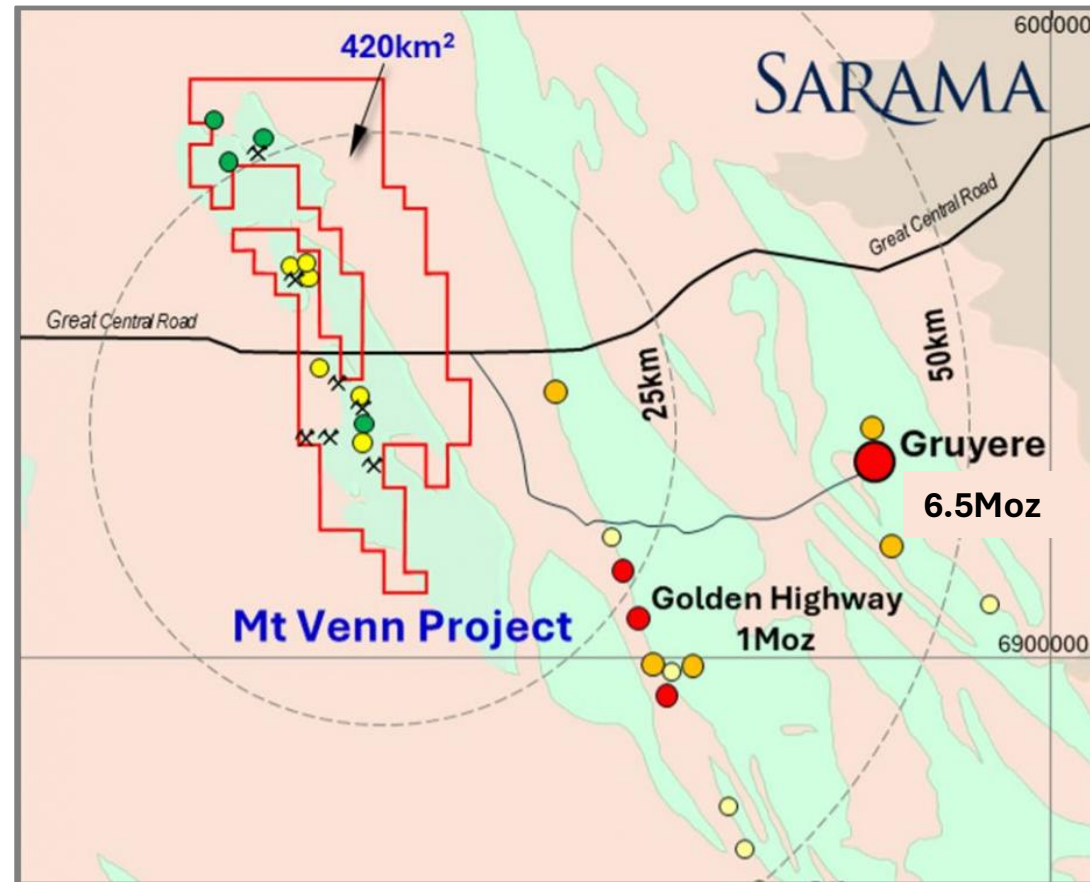
#Dundas to spend \$2M on exploration over 2 years for 80%



30 December 2025. CAZALY RESOURCES LTD ASX ANNOUNCEMENT. "DUNDAS MINERALS TO EARN-IN AND FUND EXPLORATION AT CAZALY'S ROMANO PROJECT"

JOINT VENTURE PROJECTS – Western Australia

GOLD, NICKEL, PGE's - MOUNT VENN (20% CAZ / 80% SRR)



MOUNT VENN (CAZ 20%)

- Tier 1 Location, North-Eastern Goldfields
- 50km under-explored greenstone belt
- Historical drilling intersected **wide zones of gold mineralisation** over 4km strike
- 40km from 8Moz **Gruyere Gold deposit**

ASX:CAZ • CAZALYRESOURCES.COM.AU

COPPER, NICKEL & GRAPHITE MCKENZIE SPRINGS (30% CAZ / 70% FIN)

MCKENZIE SPRINGS (CAZ 30%)

- Kimberley region, WA
- Proven mineral district, along strike of the **Savannah Nickel Mine**
- Large project with >13km of **prospective basal contact** of host ultramafic units
- High grade gossan samples returned **12.8% Cu, 1.9% Ni, 0.2% Co**



ROYALTIES

- **Parker Range** iron ore deposit. Mining commenced, a royalty of **A\$0.50/t** payable after the first 10 million mined tonnes
- **Hamersley** iron ore project located the Pilbara iron ore province, hosts an iron ore resource of 343.2Mt at 54.5% Fe. **Royalty of US\$0.30/t**

INTERNATIONAL REE PROJECTS

CANADA & NAMIBIA



ABENAB NORTH, NAMIBIA - COPPER, REE, AND BASE METALS

WORLD CLASS MINERALISED DISTRICT



Large Scale Project covering 790km²
Licence GRANTED



In World Class **African Copper Belt**
Hosts the nearby *Tsumeb* Copper Mine
Mined for ~100 years, 30Mt ore @ 4.3% Cu

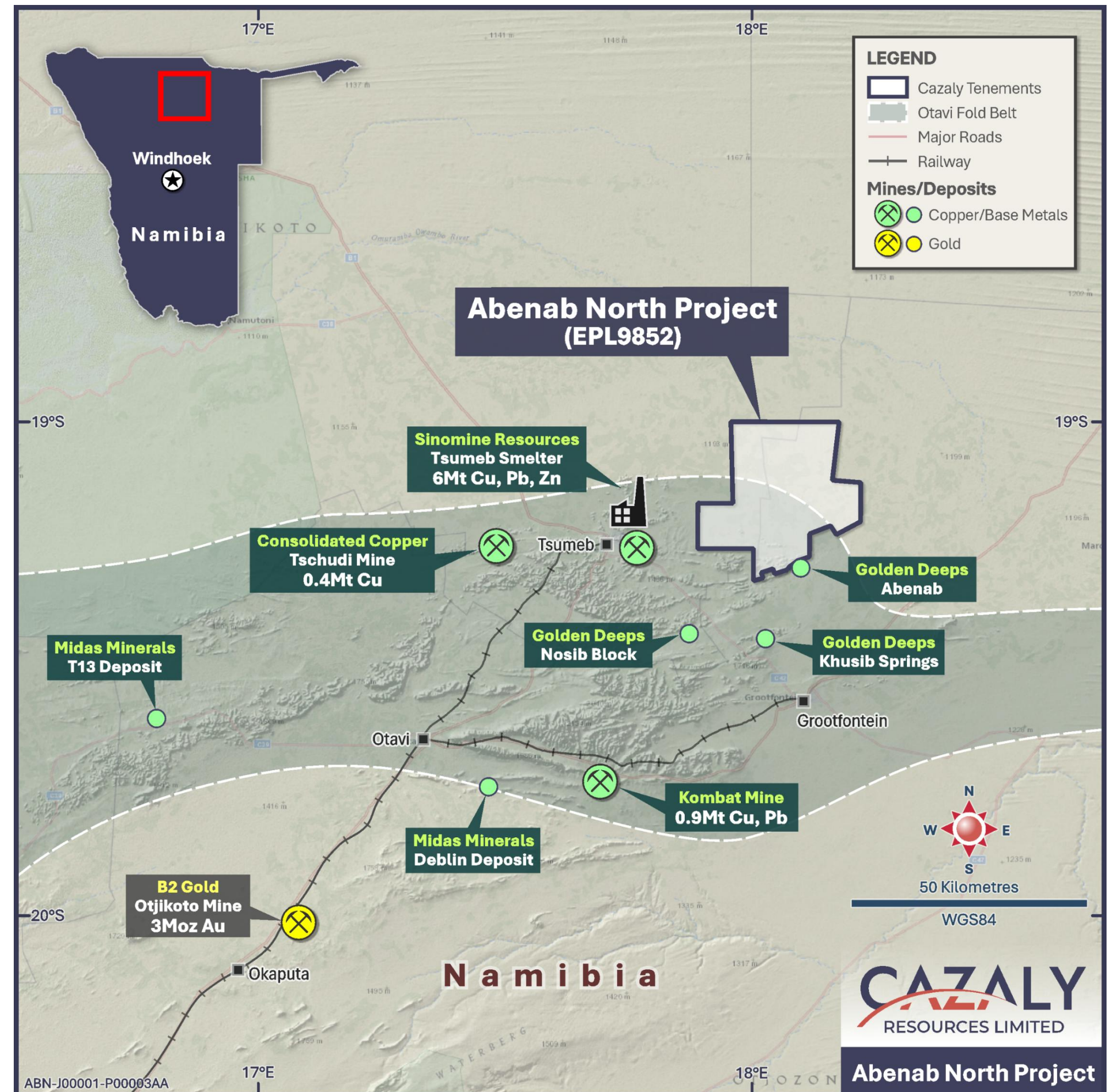


Excellent Infrastructure
Sealed roads, rail to port, high voltage power,
telecommunication networks, and water

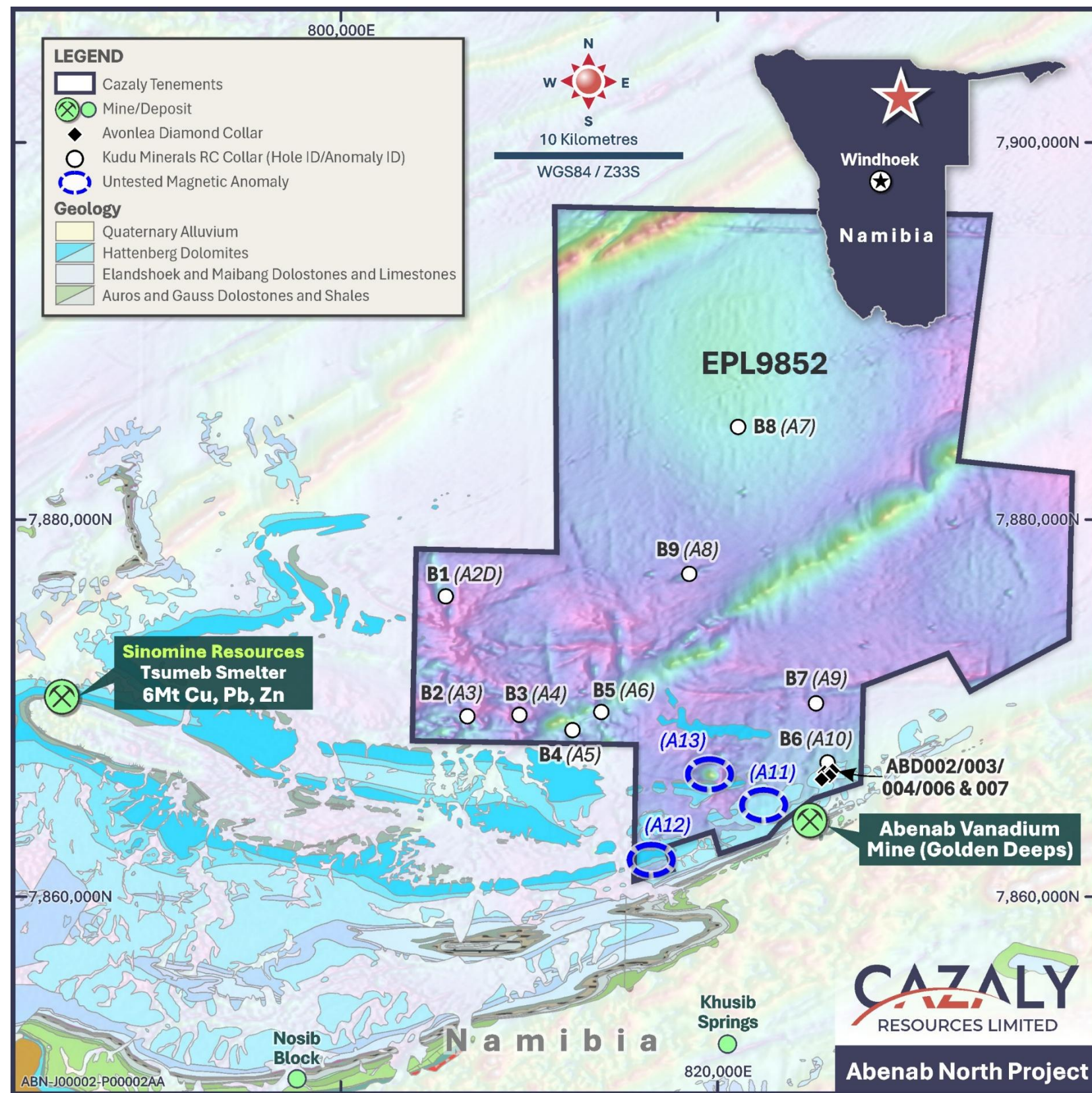


Mining processing facilities nearby
in the town of Tsumeb

ASX:CAZ • CAZALYRESOURCES.COM.AU



Multiple Targets - Significant historical REE intercepts



NUMEROUS PIPE-LIKE ANOMALIES TO TEST



2004 Kudu Minerals Carbonatites intersected in 6 of the 9 drill holes

- Anomaly 10, tested by drill hole B6: 0.68% (CeO₂ + La₂O₃ + Nd₂O₃) over 45m from 55m, incl. 2.36% (CeO₂ + La₂O₃ + Nd₂O₃) from 86-90m



2010 Avonlea Minerals drilled Anomaly 10

- ABD006 19.9m @ 0.48% TREO from 65.5m
- ABD006 16.7m @ 0.66% TREO from 94.6m (including 1.2m at 1.89%)
- ABD007 3.0m @ 1.19% TREO from 90.2m
- ABD007 39.7m @ 0.55% TREO from 100.6m (including 3.6 m @ 1.22%)

Immediate Discovery Potential

Cazaly Reprocessed Magnetics



Highlights 'booming' target at Anomaly 13 "CADIX"

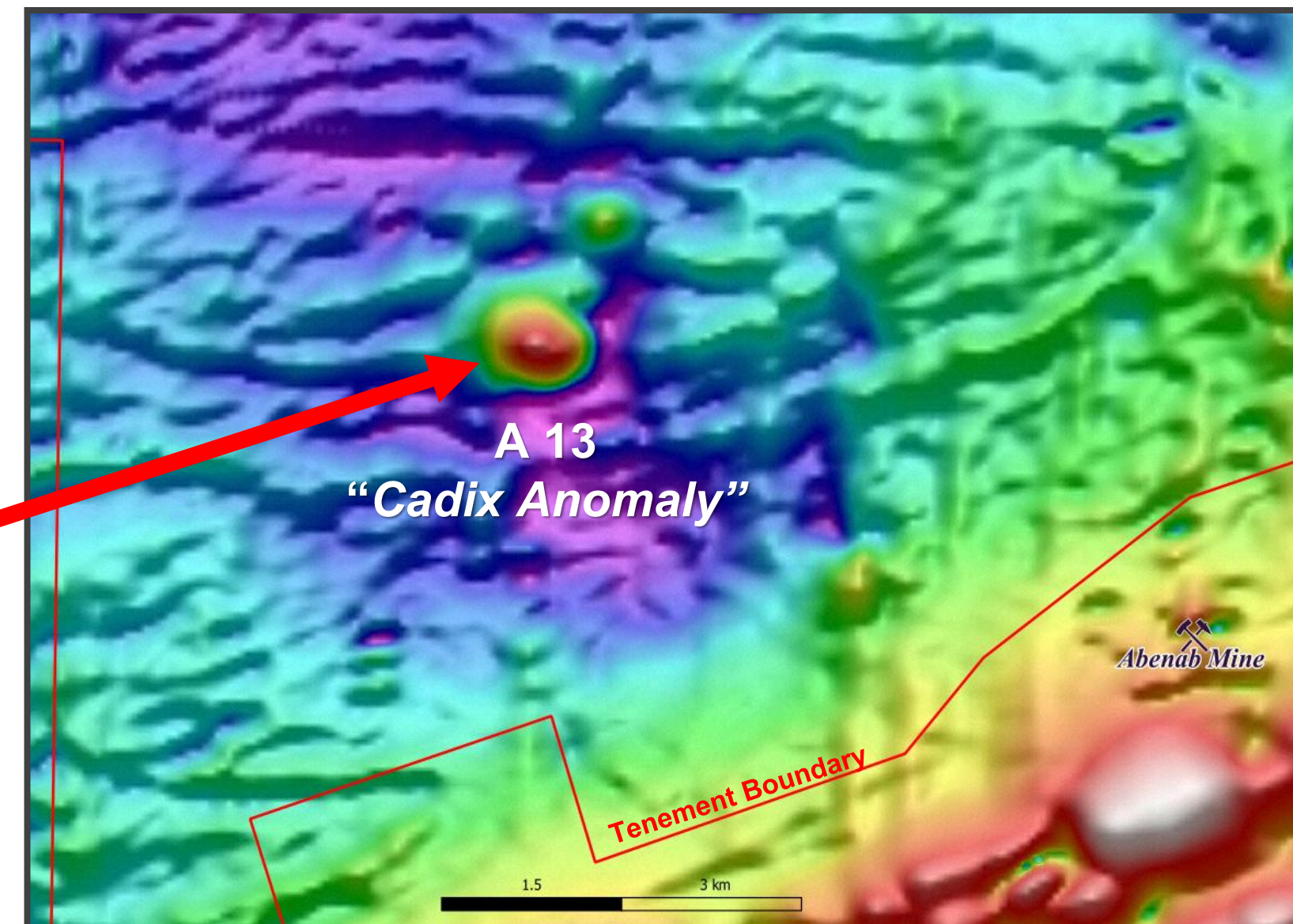
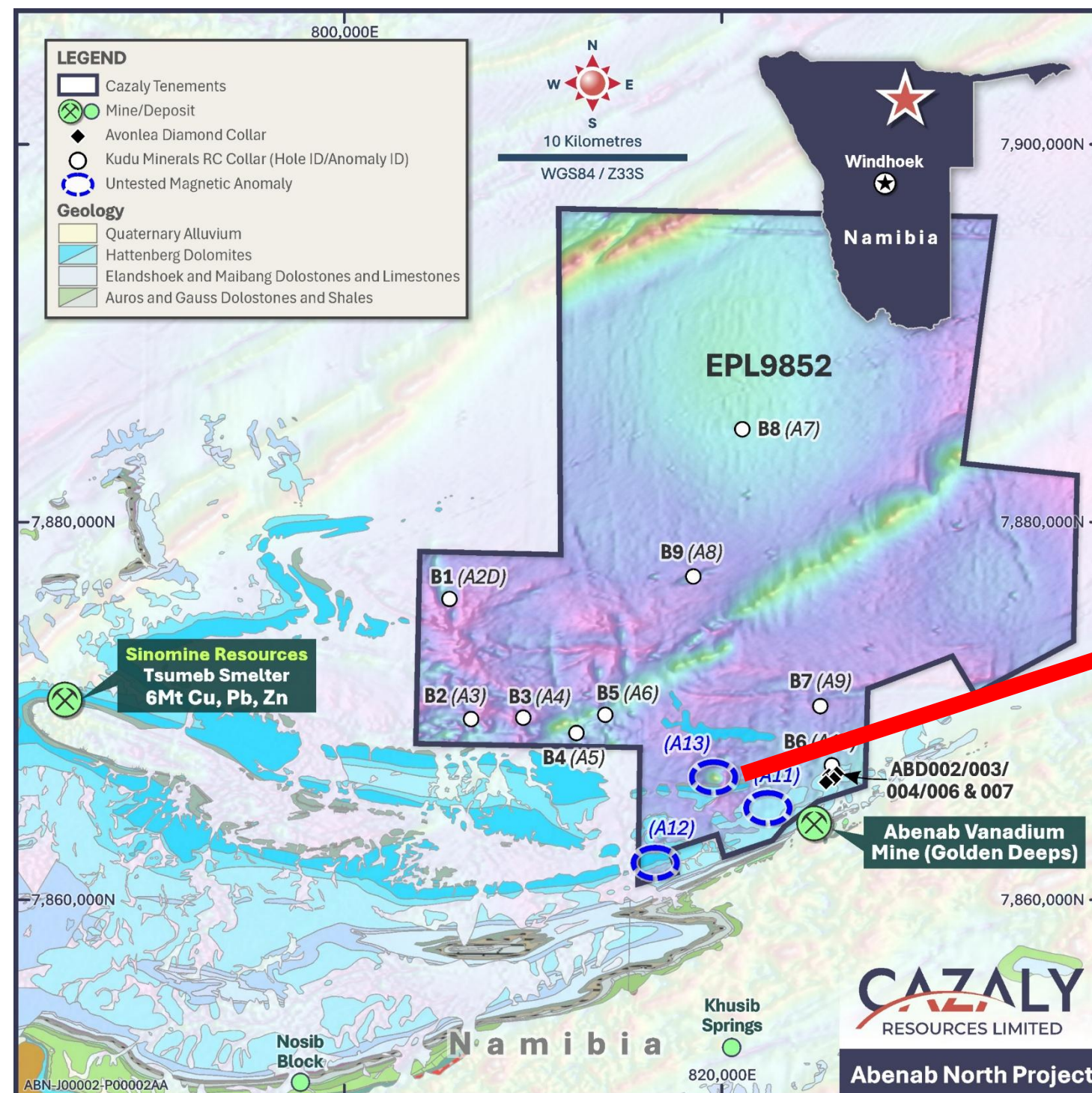
- Single historic vertical drill hole by JICA did not adequately test the main anomaly



HIGHLY MINERALISED PROVINCE
Multiple 'pipe-like' targets confirmed regionally



CADIX UNTESTED +800M Ø MAGNETIC ANOMALY
WALK UP DRILL TARGET



CARB Project, Ontario, Canada – Nb, REE

REGIONAL SCALE TARGETS (100% CAZ , 2% vendor royalty)



Large Scale Carbonatite
~3km in diameter



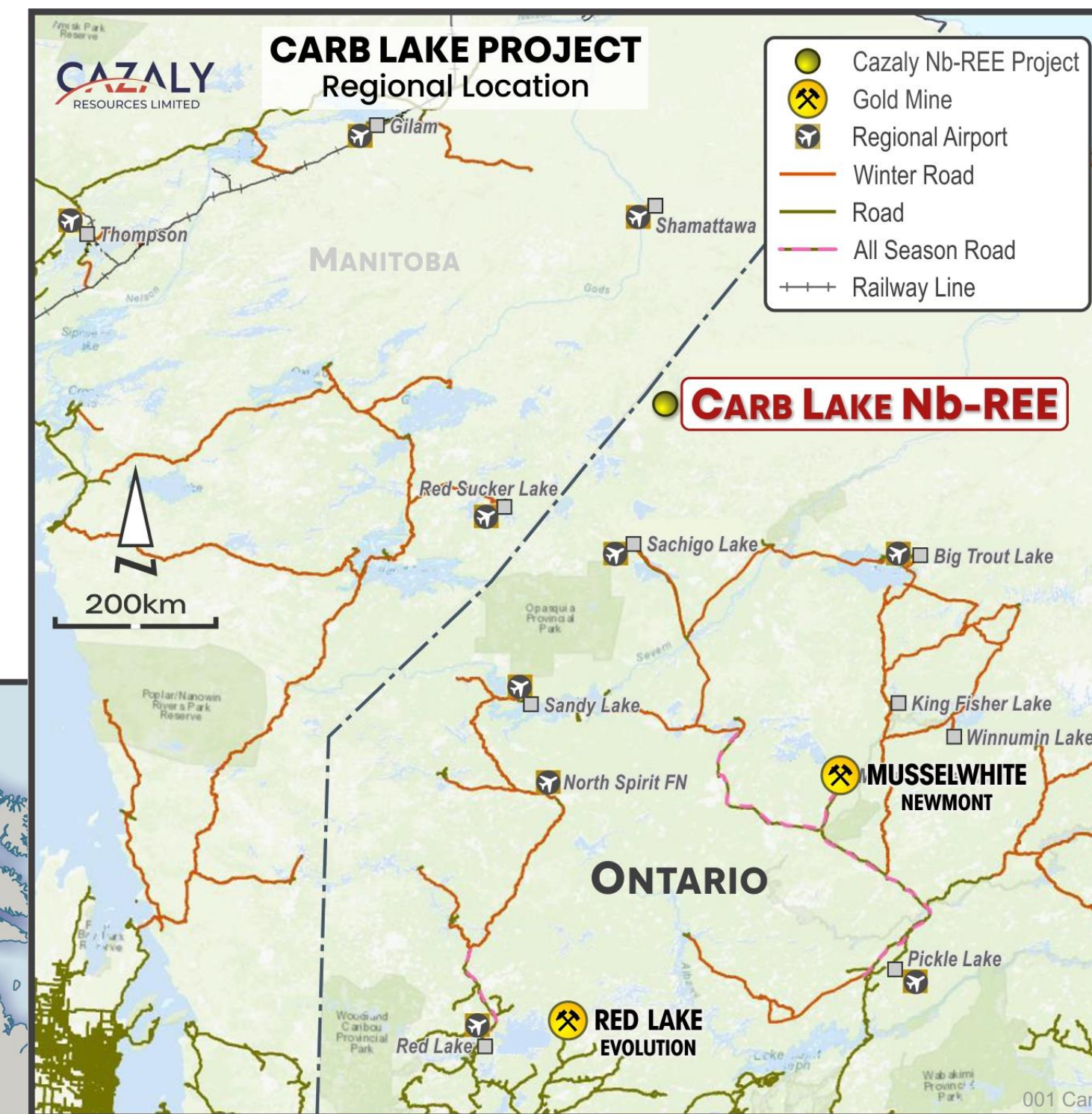
Located in the Red Lake district, a well-known mining province in Ontario



Largely unexplored
Just 4 holes drilled in 1960's
No exploration drilling in over 50 years



Anomalous REEs in limited sampling, plus Nb up to 7.1%



Cazaly Fieldwork



Cazaly re-assayed historic core with pXRF



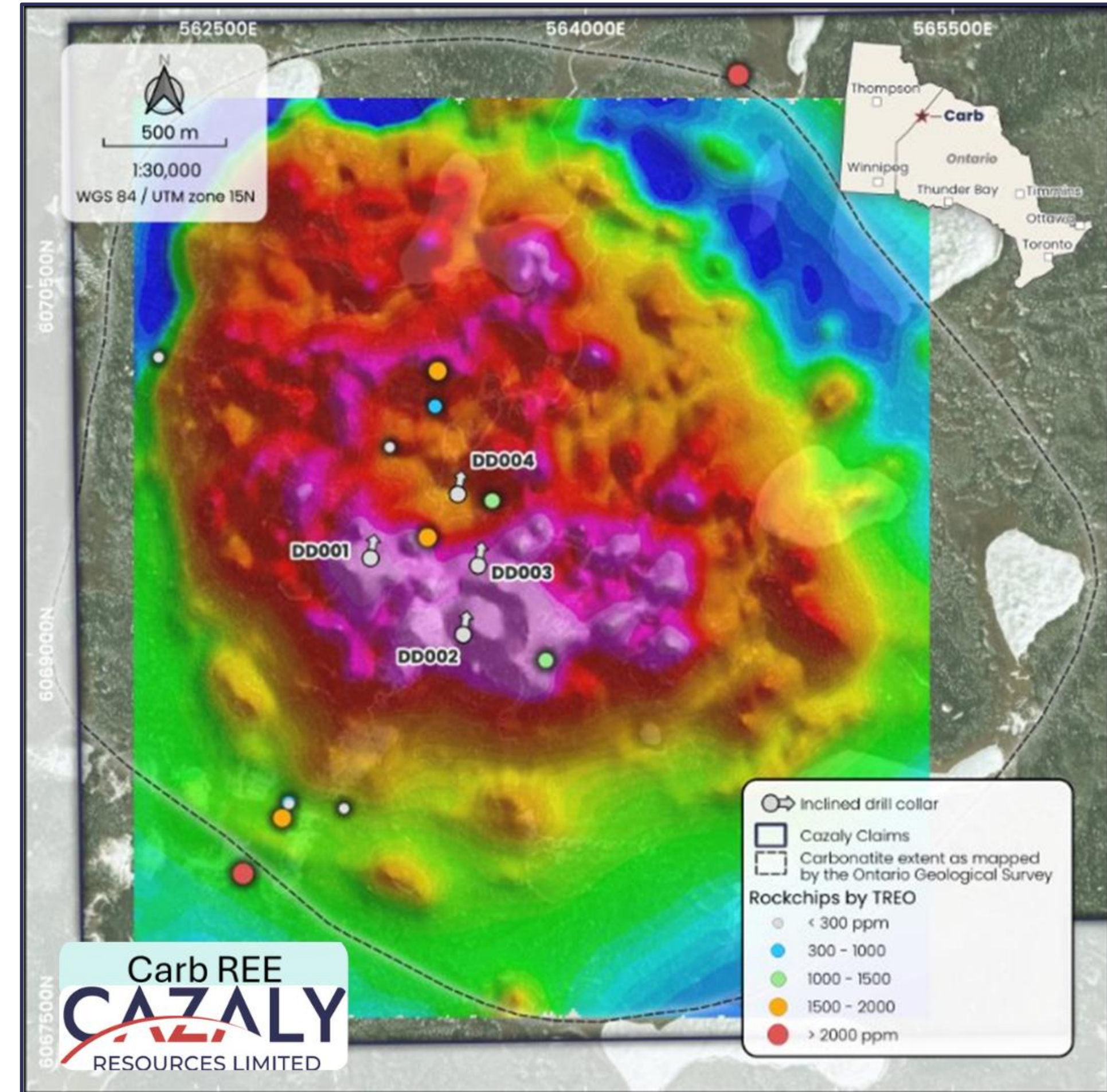
Best results include **Pr 0.42%**, **Nd 1.49%**, **La 3.36%**, **Ce 4.34%**, and **Nb 0.6%**



TREO up to 2482ppm; **NdPr up to 25% of TREO**;
Niobium up to 917ppm



1960s drill core stored at the Geological Survey, Ontario



Cautionary Statement (pXRF)

The pXRF exploration results reported herein have been collected on historical core samples and are not equivalent to analytical laboratory results. The use of spot pXRF readings only provides an indication of the potential order of magnitude of analytical laboratory assay results. The downhole location of pXRF results collected cannot be relied upon for actual location due to the incomplete nature of the remaining historical drill core.

SIZE COMPARISON

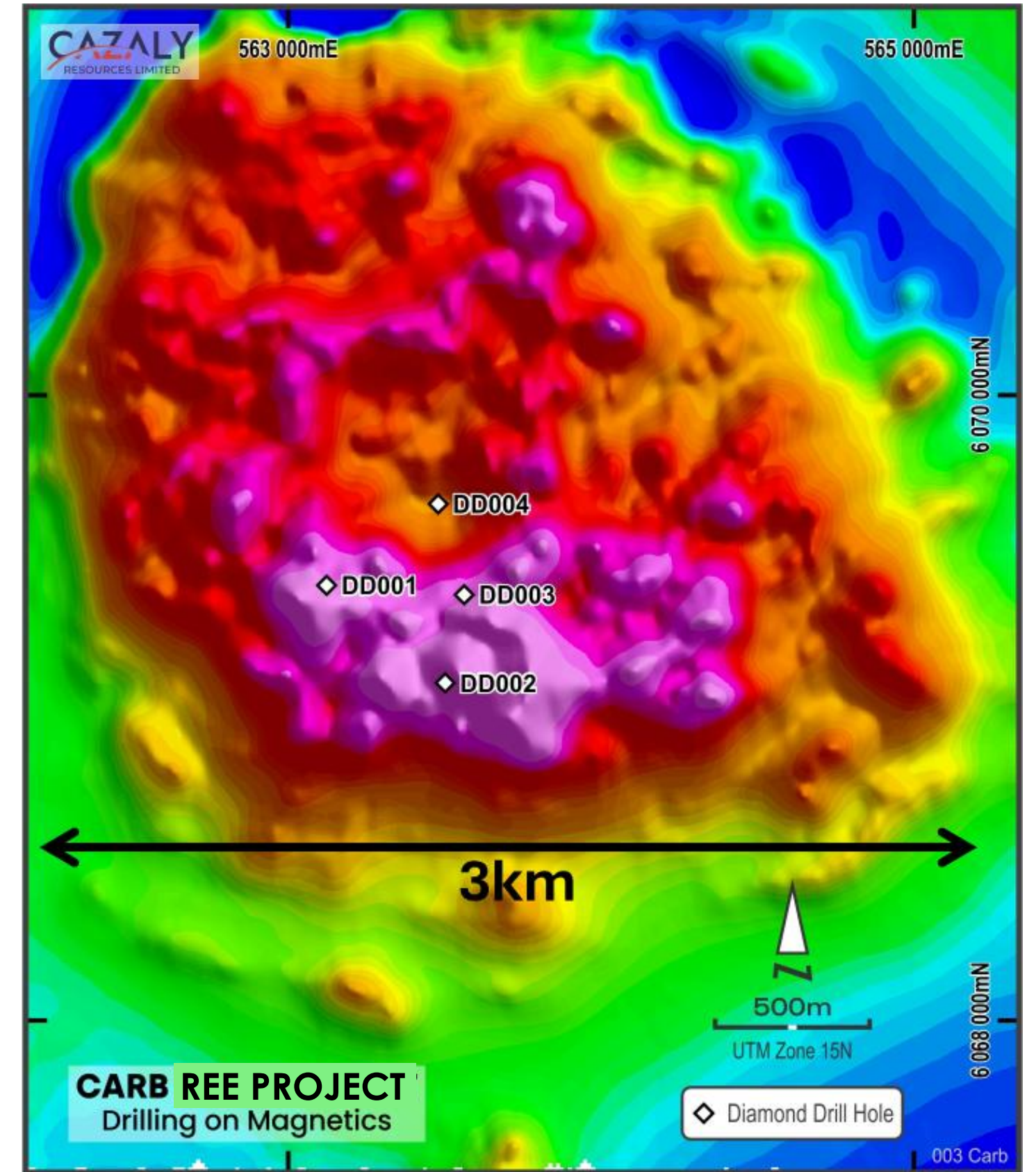
Mineralised Carbonatites

Carbonatite Complex	Company	Location	Diameter (km)	Stage
Araxa	CBMM	Brazil	5	Producing
Carb Nb-REE	Cazaly Resources	Canada	>3	Exploration
Mount Weld	Lynas Rare Earths	Australia	3	Producing
Luni	WA1	Australia	Ellipse 3 x 1	Exploration
Nechalacho	Vital Metals	Canada	2	Producing
Kangankunde	Lindian Resources	Malawi	0.8	Development

Cautionary Statement

The table above is presented to illustrate only the size of carbonatite complexes around the world. It should not be considered a comparison of company or project, a number of the projects in the table above are in development or production. The Carb Carbonatite is in the early exploration stage and there is no certainty that further exploration work will result in determination of an economic mineral resource.

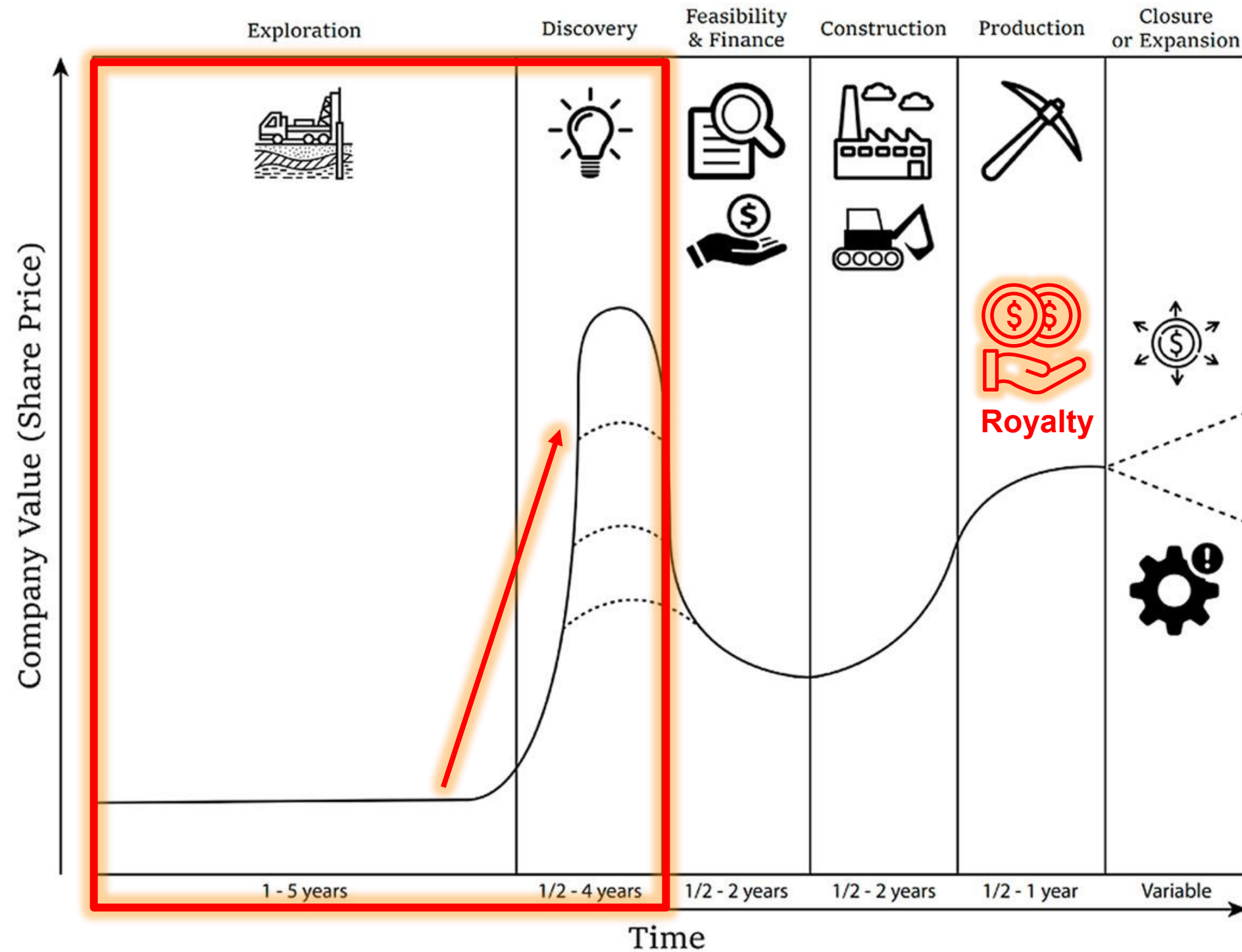
AEROMAGNETIC IMAGE CARB REE & NIOBIUM CARBONATITE



LARGELY UNEXPLORED

THE INVESTMENT OPPORTUNITY

Gold Focused at Goongarrie



POTENTIAL for NEW LARGE SCALE GOLD & REE DISCOVERIES



Experienced Board & management with strong track record from exploration to commercialisation

Well funded & Actively exploring

Value add and de-risk projects from exploration through to resource development



Maintain a pipeline of projects across Gold, Copper and REE with geographical exposure

Future Royalty Streams & Divesting projects to generate income and return value to shareholders

CAZALY

RESOURCES LIMITED

FOR MORE INFORMATION, PLEASE CONTACT:

Tara French

Managing Director

tara@cazalyresources.com.au



ASX:CAZ • CAZALYRESOURCES.COM.AU

